

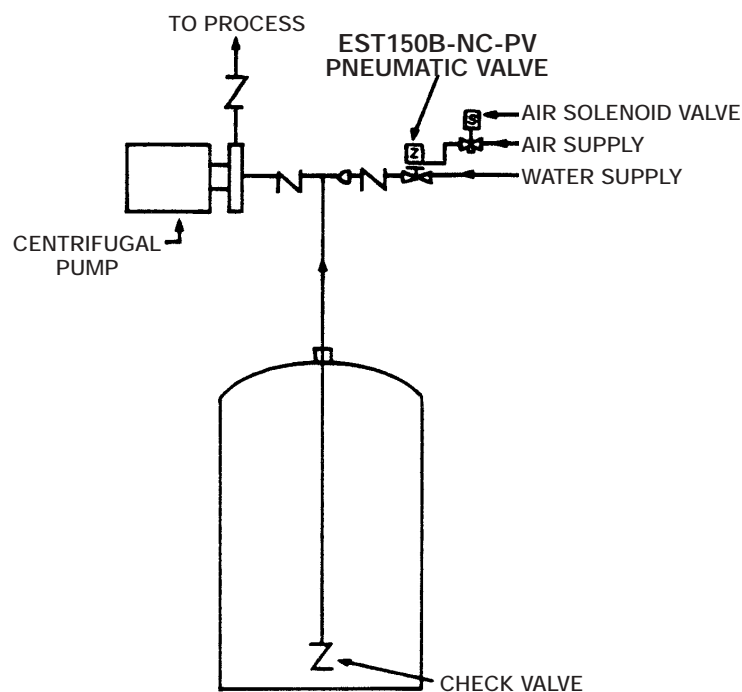
MARKET Bulk Handling of Chemicals

PRODUCT(S) Series EST150B-NC-PV Pneumatic Control Valve

REQUIREMENT To provide emergency priming system for pump.

PROCESS FLUID(S) Industrial Water

INLET PRESSURE/TEMPERATURE 50 - 70 PSI / Ambient (Air at 50 PSI)



For bulk handling of chemicals a centrifugal pump will not self-prime and can not run dry or a seal failure will occur. In the above application should the check valve in the tank not hold, the inlet piping to pump would be dry and the pump would not work. In this situation the emergency priming system

would come on and flood inlet piping, creating a prime for the pump. Plant industrial water is taken into Plast-O-Matic EST150B-NC-PV Pneumatic Control Valve, which is opened by plant air through an air solenoid valve. When air is shut-off, valve spring causes valve to close.